

55" LCD MONITOR
MDT551S

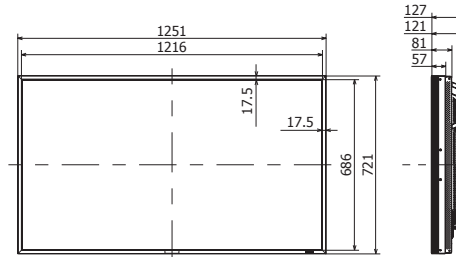
- SLIM EYE-CATCHING BEZEL DESIGN
- ADVANCED HIGH-DEFINITION DIGITAL SIGNAGE DISPLAY
- FULL 1920 X 1080 NATIVE RESOLUTION
- OPTIONAL CAT5 TRANSMITTER AND RECEIVER
- OPS COMPATIBLE, INPUT SLOT
- RJ45 PORT FOR NETWORKED CONTROL
- FRONT AND REAR AMBIENT LIGHT SENSORS
- CLOSED CAPTION SUPPORT
- ENERGY STAR COMPLIANT

LEADING THE EVOLUTION OF
HIGH-DEFINITION
DIGITAL SIGNAGE

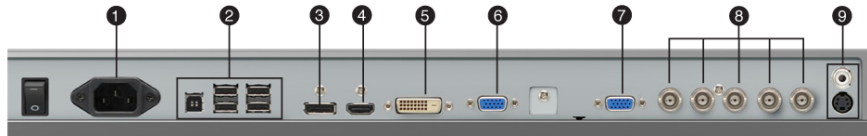


55" LCD MONITOR

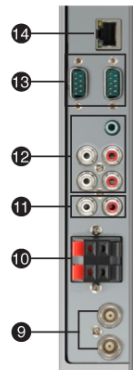
MDT551S



MULTIPLE STANDARD INPUT AND OUTPUT CONNECTORS



- ① Power in (3-pin, with earth terminal)
- ② USB hub
- ③ RGB 6 in (DisplayPort)
- ④ RGB 1 in (HDMI)
- ⑤ RGB 2 in (DVI-D)
- ⑥ RGB 3 in (mini D-sub 15-pin)
- ⑦ RGB out (mini D-sub 15-pin)
- ⑧ RGB 4 in DVD/HD in (BNC)
- ⑨ Video I/O (BNC/S, RCA connectors)
- ⑩ External speaker terminals
- ⑪ Audio out (RCA)
- ⑫ Audio in 1, 2, 3
- ⑬ RS-232C (D-sub 9-pin)
- ⑭ LAN connector
- ⑮ Option slot



Optional CAT5 Transmitter Box:
DP-2CA5-T
Optional CAT5 Receiver Box:
DP-2CA5-R
Optional S3G/HD/SD-SDI Input Box:
DP-1SDI-3G

CLASS	55" (Diagonal) LCD Monitor
VIEWABLE IMAGE SIZE	47.6 x 26.8"
ORIENTATION	Landscape / Portrait / Face-up
BRIGHTNESS	700 cd/m ²
PIXEL PITCH	0.630 mm
CONTRAST RATIO	1300:1
DIMENSIONS (W x H x D in.)	49.3 x 28.4 x 5.0"
WEIGHT	81.7 lbs
BEZEL WIDTH	0.63"
RESPONSE TIME	10 ms (gray to gray)
VIEWING ANGLE	Horizontal and vertical: 178°
VIDEO/AUDIO INPUTS AND OUTPUTS	mini D-Sub 15 pin In/Out, HDMI, DVI-D, DisplayPort, CAT5 In/Out (optional), 5 BNC (Component) In, S-Video, Composite (BNC In/Out), 2 x Audio L/R (RCA), Audio Stereo mini jack, RS-232C, LAN, 5 x USB (1 upstream/4 downstream)
SPEAKER OUTPUT	External speaker jack
CONTROL INPUT/OUTPUT	RS232C (D-Sub 9 In/Out), LAN
POWER CONSUMPTION	Max.: 316W (293W w/o speakers) Factory default setting: 202W
ESTIMATED BACKLIGHT LIFE	Up to 50,000 hours*
AUDIO SPEAKER	Built-in Rear Facing. Side Mount Optional Speakers: SPI-551S
TABLE STAND	Optional: ST-461V
WALL MOUNT COMPATABILITY	8-M8 Screws holes (200mm (7.9") pitches) for monitor mount
WARRANTY	3-years parts and labor, Express Replacement Assistance, toll-free 24x7 technical support

*Results may vary depending on usage and operating environment.

Specifications subject to change without notice.